

# Skin Assessment and Ongoing skincare



Produced by PDSN Rachel Moscrop,  
GWH, Swindon, for the SWCYPDN



# AGENDA



- Skin Assessment
- Prophylactic Skincare
- Troubleshooting
- Yellow Card Reporting

# Introduction




## The current skincare situation

- Increasing use in adhesive technology to support diabetes management
- Increasing reports of irritation and areas of concern
- Varied approaches in practice to support patients
- Limited research and evidence regarding skincare in diabetes
- Patients are having technology removed due to skin issues

# Skin Assessment

- Prior to commencing adhesive technology
- Identify potential areas of concern
- Prompt prophylactic advice
- Provides a baseline of skin health
- Introduces adhesive remover and barrier films



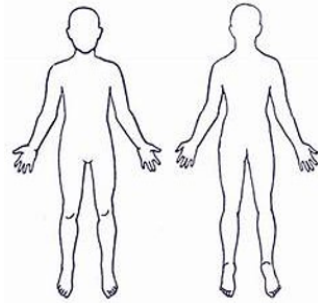
Skin Assessment Tool – for use with diabetes adhesive devices Patient details

Current Skin Health

Injection/Infusion/Sensor sites used:

Current issues – including rashes, tattoos, lipohypertrophy, lipostrophy, scars, wounds (mark on diagram and describe):

Front Back



Have photographs been taken?

Produced by PDSN Rachel Mascrop, GWH Swindon for the SWCYPDN  
December 2024

Contributing factors

Nutrition and Hydration:

Current Physical Activities:

Emotional/Play considerations for insertion/removal of devices:

Skincare plan – Including identified potential problems and prophylactic care:

GP Prescription sent: Date:

Completed by:

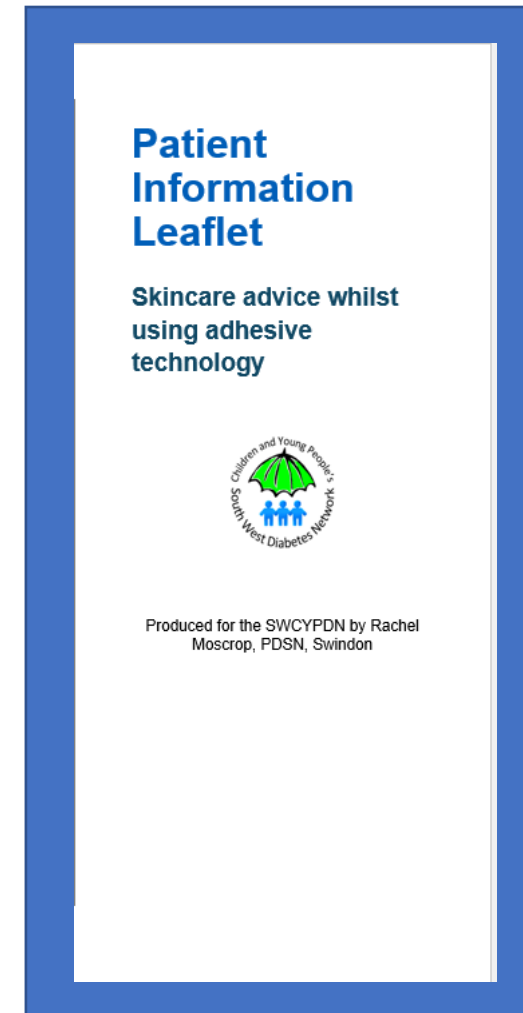
Completed with:

Reassessment date:

Produced by PDSN Rachel Mascrop, GWH Swindon for the SWCYPDN  
December 2024

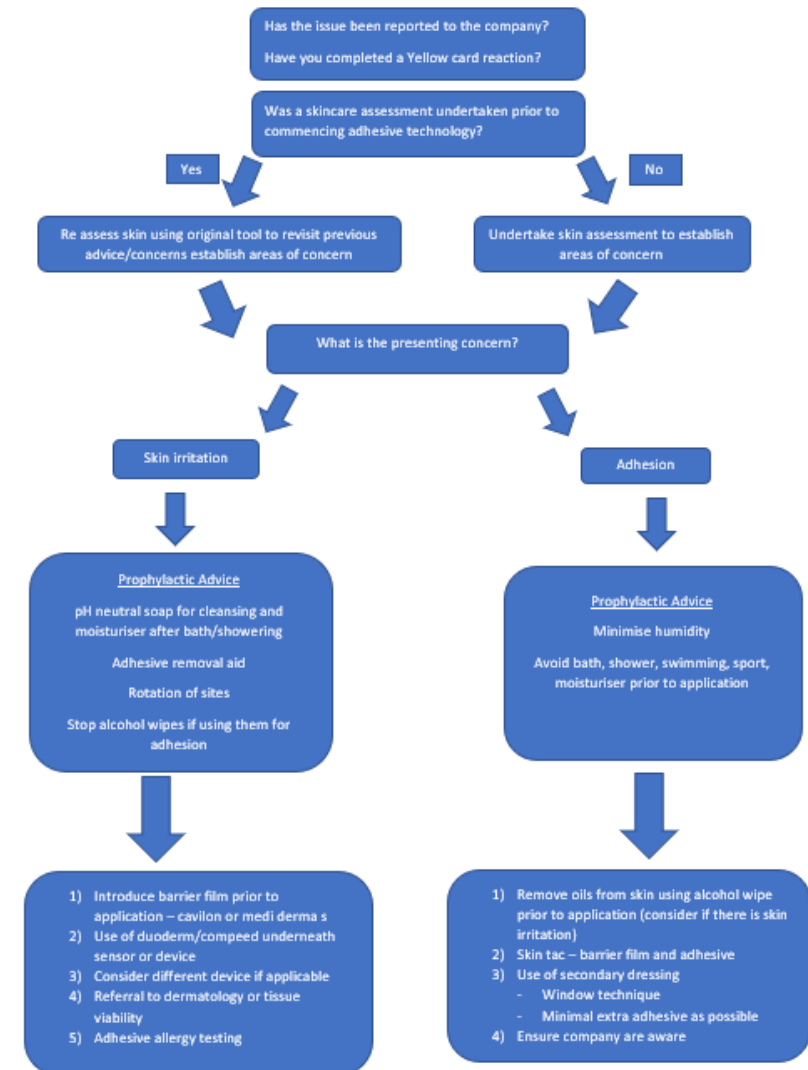
# Prophylactic Skincare

- Aims to promote good skin health from diagnosis
- Provides standardised advice across a service and/or network
- Written information for patients
- Simple troubleshooting of common issues



# Troubleshooting

- Advice and interventions to be implemented with support from the Diabetes team
- Lack of consistency and availability of products across formularies/areas.
- Referrals to Tissue viability and/or dermatology for problematic issues. Accessing these services varies across trusts and tend to have long waiting lists.
- Regular discussions with wider teams around common themes and increased learning.



# Yellow Card Reporting

- Can be filled in by patients or healthcare professionals
- MRHA website

[Yellow Card | Making medicines and medical devices safer \(mhra.gov.uk\)](https://yellowcard.mhra.gov.uk)

A screenshot of the Yellow Card reporting website. The browser address bar shows 'https://yellowcard.mhra.gov.uk'. The main heading is 'Welcome to the Yellow Card reporting site'. Below this, a paragraph explains the purpose: 'Report suspected side effects to medicines, vaccines, e-cigarettes, medical device incidents, defective or falsified (fake) products to the Medicines and Healthcare products Regulatory Agency to ensure safe and effective use.' There is a section titled 'Find the medicine / vaccine / device you wish to report.' which contains a text input field with the placeholder 'Enter medicine, vaccine or device name' and a black button labeled 'Start report'. Below this, a paragraph states: 'Use the [Coronavirus Yellow Card reporting site](#) to report suspected side effects to medicines and vaccines or medical device and diagnostic adverse incidents used in coronavirus treatment.' At the bottom, a paragraph asks: 'Reporting as a manufacturer, marketing authorisation holder or other non-patient or health professional for a medical device adverse incident, fake or defective healthcare product? See our [reporting guidance page](#).'



# Summary

- A starting point
- Initial assessment and prophylactic advice are important
- Guide for professionals, regular sharing and learning across teams
- Refer to specialist services
- Report reactions through Yellow Card Reporting





# Questions?

[Further reading and references within Article accessible online :  
Skin assessment and ongoing skincare with adhesive diabetes management  
devices](#)

Thank you

